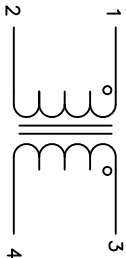


The information contained in this drawing is the sole property of Coil Winding Specialist, Inc. Any reproduction in part or whole without written permission of Coil Winding Specialist is prohibited.



SCHEMATIC

DIMENSIONAL TOLERANCE INCHES [MM]						
A	B	C	D	X	Y1	Y2
TYP	TYP	TYP	TYP	REF	TYP	TYP
1.83 [46.50]	0.87 [22.00]	1.04 [26.50]	0.091 [2.30]	1.21 [30.70]	0.56 [14.22]	0.43 [10.82]

REVISION HISTORY				SIGN & DATE			
REV	ECN	DESCRIPTION	BY	DATE	CHK	DATE	
A		INITIAL DRAWING RELEASE	TN	09/04/2	JL	09/04/2	

- 9 BUILT TO RoHS COMPLIANCE
- 8 VARNISH PART AND CURE
- 7 LABEL P/N, REVISION AND DATE CODE
- 6 WRAP CHOKE WITH GLASS TAPE
- 5 TRIP AND TIN LEADS AS SHOWN
- 4 WIND EVENLY SPACED ON EACH SIDE
- CONSTRUCTION:

WEIGHT: APPROX. 100 GRAMS

OPERATING TEMPERATURE RANGE: -40°C to 125°C

SRF = 600KHz TYPICAL

|Z| = 2.2 KILO-OHMS TYP @ SRT

INTERWINDING CAPACITANCE = 36pF TYP @ SRF

LEAKAGE INDUCTANCE = 8 uH TYP @ 10KHz, 250mV

HI-POT WINDING-TO-WINDING 2500 VDC @ 1mA FOR 10 SEC.

DCR ON EACH WINDING = 2.6 MILLI-OHMS MAX.

INDUCTANCE = 1.60 mH MIN. @ 1 kHz, 250mV, 0ADC BIAS

RATED CURRENT MAX. @ 40 AMPS RMS

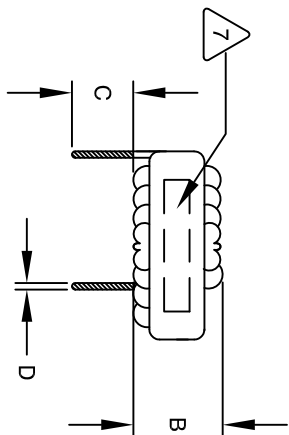
SPECIFICATIONS @ 25 °C :

- VARNISH: DOLPH OR EQUAL
- WIRE: UL RECOGNIZED 200°C RATED MAGNET WIRE
- CORE: COATED FERRITE CORE
- 1 MATERIAL: UL RECOGNIZED FOR FLAMMABILITY

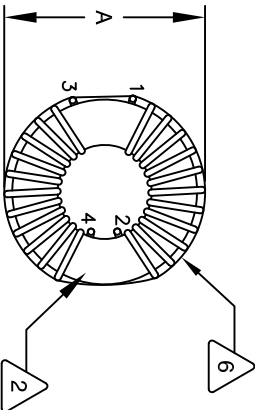
DIM. WITHOUT ANY TOLERANCE. THIS DIM. CAN VARY A LITTLE FROM PART TO PART.

"TYP" IN DIMENSIONAL TOLERANCES REFERS TO A NON-CRITICAL TYPICAL (AVERAGE)

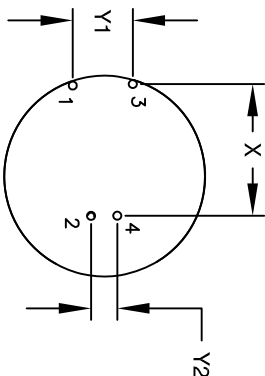
NOTES: UNLESS OTHERWISE SPECIFIED, READ FROM BOTTOM UP.




SIDE VIEW



BOTTOM VIEW



MOUNTING HOLES PATTERN

PARTS LIST									
AUTOCAD		X		sales@coilws.com www.coilws.com			Coil Winding Specialist, Inc. 353 W. Grove Ave. Orange, CA 92665		
SOLIDWORKS									
SIGN		DATE		Common Mode Choke 1.6mH MIN, 40Amp					
DRWN		TN							
		09/04/22							
CHKD		JM							
		09/04/22							
ENGR.		JL		CWS-1TF-13079					
		09/04/22							
APPR.		JL		REV A					
		09/04/22							
SCALE		B							
SIZE		DWG. NO.							
ANGLE PROJECTION									
DO NOT SCALE DRAWING									
UNLESS OTHERWISE SPECIFIED									
DIMENSIONING AND TOLERANCE PER ANSI Y14.5M AND [MILLIMETERS].									
ALL DIMENSIONS ARE IN INCHES									
TOLERANCE INCHES: $\varnothing = \pm 0.30"$									
.XXX = $\pm .010$ .XX = $\pm .020$									
TOLERANCE METRICS: $\varnothing = \pm 0.30"$									
.XXX = $\pm .254$ .XX = $\pm .51$									